

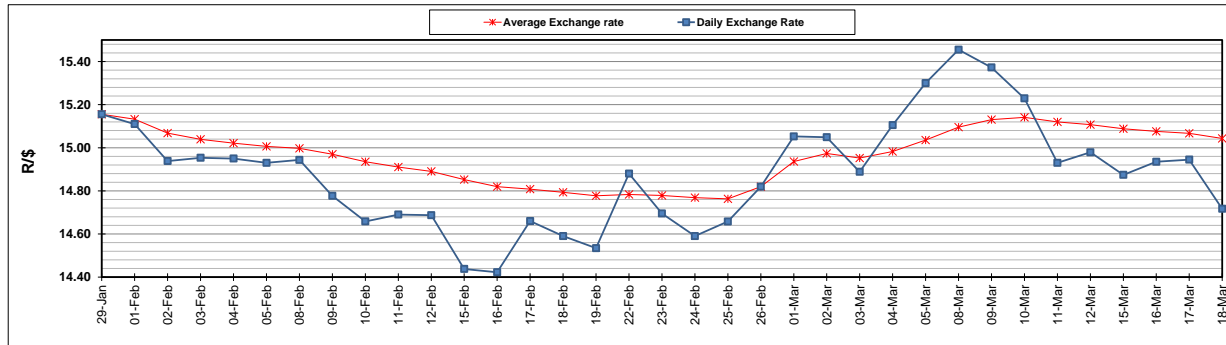
	PETROL 95 ULP	PETROL 93 ULP & LRP	DIESEL 0.05%	DIESEL 0.005%	ILL. PAR.
GAUTENG PUMP PRICE (SA c/l) AS FROM 03/03/2021	1,632.000	1,615.000	-	-	-
WHOLESALE PRICE (SA c/l) AS FROM 03/03/2021	-	-	1,412.420	1,416.820	845.688
SINGLE NATIONAL MAXIMUM RETAIL PRICE	-	-	-	-	1,071.000
BASIC FUEL PRICE - 18/03/2021 (SA c/l)	719.259	706.948	668.801	671.398	646.956
PRESS RELEASE CONTRIBUTION TO BFP 03/03/2021 - 18/03/2021 (SA c/l)	665.170	658.170	653.630	658.030	633.128
UNIT OVER/(UNDER) RECOVERY - 18/03/2021 (SA c/l)	(54.089)	(48.778)	(15.171)	(13.368)	(13.828)
AVERAGE BASIC FUEL PRICE 26/02/2021 - 18/03/2021	739.799	729.063	701.767	704.570	679.170
AVERAGE UNIT OVER/(UNDER) RECOVERY 26/02/2021 - 18/03/2021	(87.629)	(83.893)	(58.937)	(57.740)	(55.442)

ANALYSIS MOVEMENT OF AVERAGE OVER/(UNDER) RECOVERY

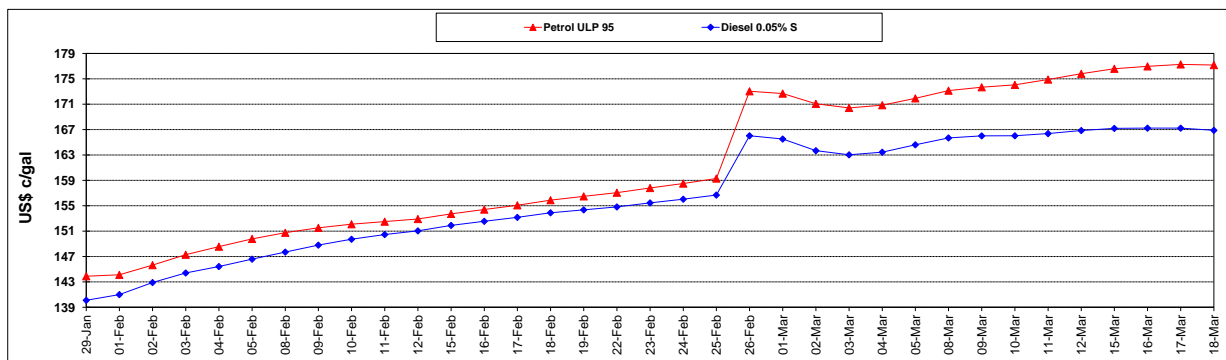
	PETROL 95	PETROL 93	DIESEL 0.05%	DIESEL 0.005%	ILL. PAR.
- MOVEMENT IN INTERNATIONAL PRODUCT PRICES	(73.845)	(70.309)	(45.861)	(44.612)	(42.787)
- MOVEMENT IN EXCHANGE RATE	(13.784)	(13.584)	(13.076)	(13.128)	(12.655)
AVERAGE UNIT OVER/(UNDER) RECOVERY 26/02/2021 - 18/03/2021	(87.629)	(83.893)	(58.937)	(57.740)	(55.442)

R/\$ EXCHANGE RATE - (R/\$14.7168 - 18/03/2021)

EXCHANGE RATE USED IN BASIC FUEL PRICE



INTERNATIONAL PRODUCT PRICES OF BASKET USED IN BASIC FUEL PRICE



BASIC FUEL PRICE IN SA CENTS PER LITRE

